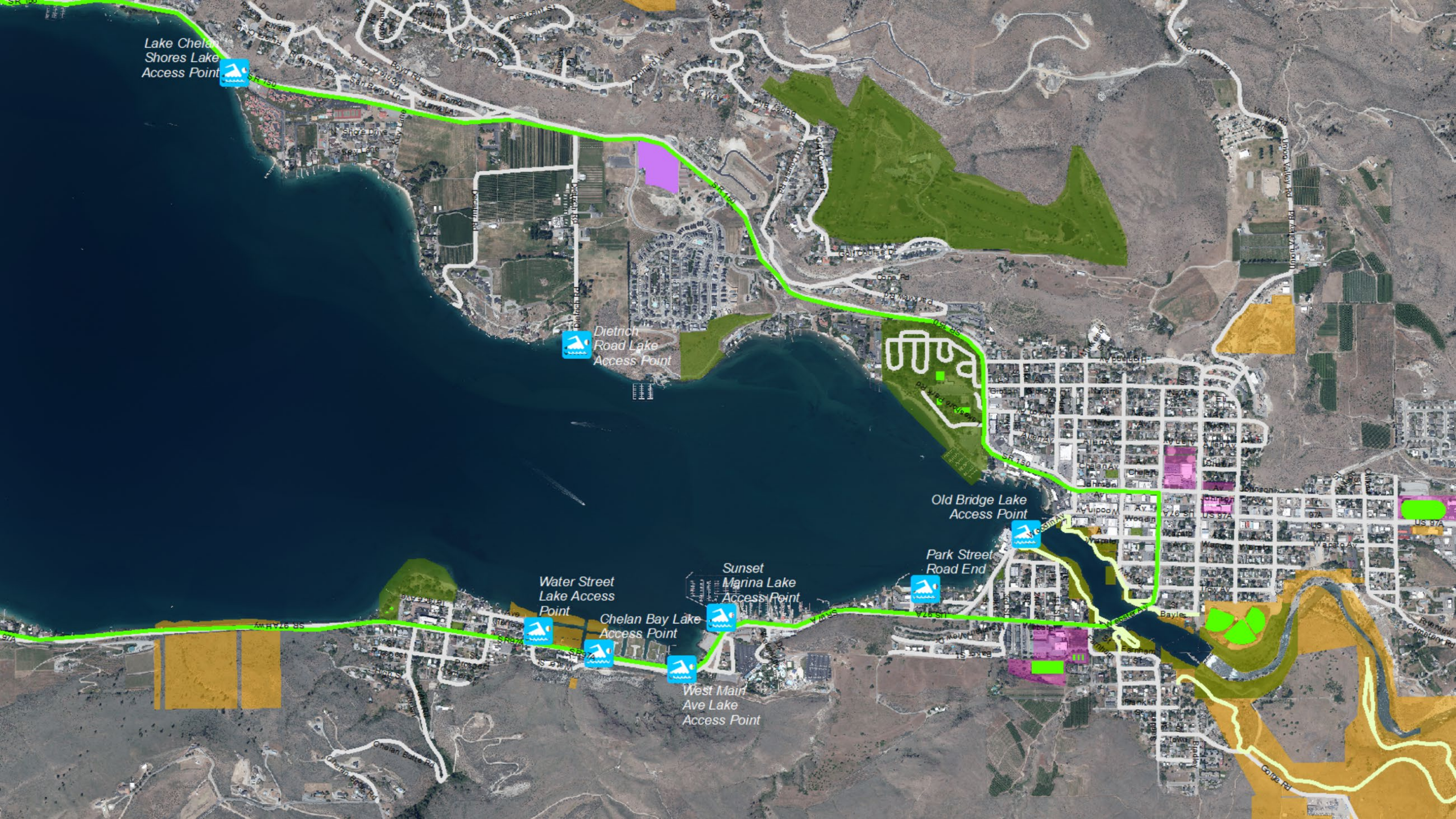




Road End Parks

WATER ACCESS POINTS

JANUARY 23, 2024



Lake Chelan
Shores Lake
Access Point



Dietrich
Road Lake
Access Point



Water Street
Lake Access
Point



Chelan Bay Lake
Access Point



West Main
Ave Lake
Access Point



Sunset
Marina Lake
Access Point



Park Street
Road End



Old Bridge Lake
Access Point



Park Street Progress 2024

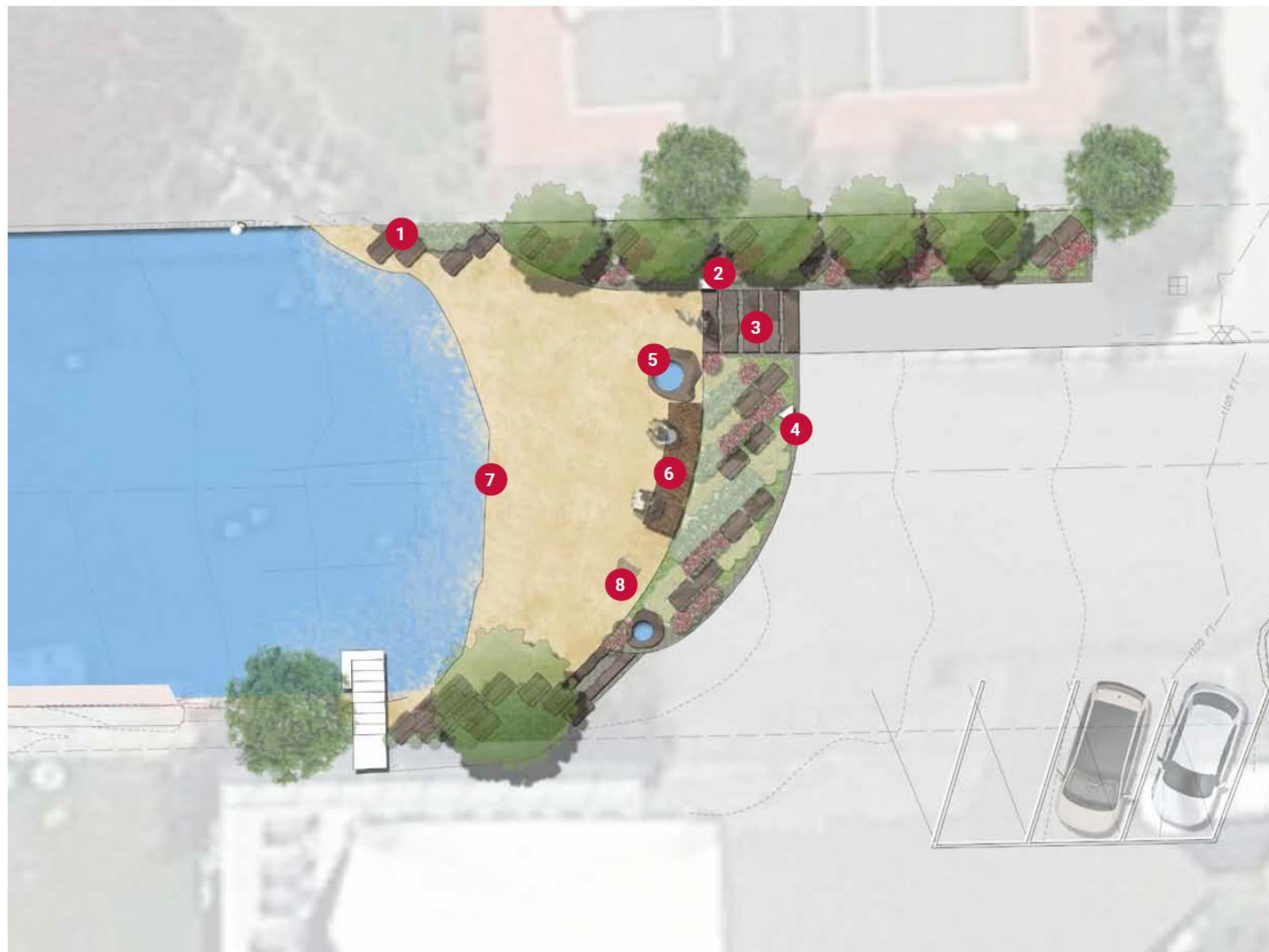
- ▶ Design Complete
 - ▶ Survey - pro bono from Pinnacle Surveying
- ▶ Permits Acquired
- ▶ Bid documents/ bidding winter
- ▶ Letting early spring
- ▶ Construction spring



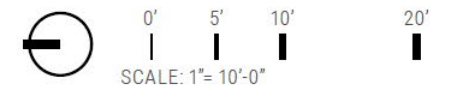
Color Landscape Plan



Color Landscape Plan



- 1 Miniature Basalt Columns, Typ.
- 2 Little Free Library,
Populated with books about Chelan
- 3 Basalt Cut Stone Pavers/Steps, Typ.
- 4 Signage
- 5 Bird Bath Stone, Typ.
- 6 Public Bench
- 7 Expanded Beach
- 8 'Fossil Dig'





Sunset Marina/ Lady of the Lake



Public Lake Access - 5 - Lady of Lake/ Sunset Marina

Public Lake Access - 6 - W. Main

Waterside Dr



Public Lake Access - 5 - Lady of Lake/ Sunset Marina

London Ave



Concept Plan - #13 Vacated Street at Sunset Marina & Lady of the Lake
 Chelan Waterfront Access and Spader Bay
 Property Feasibility Study

01/09/2020

CITY OF CHELAN



Scale: 1" = 20'



j.a. brennan
ASSOCIATES PLLC





LAKE CHELAN

W WOODIN AVE

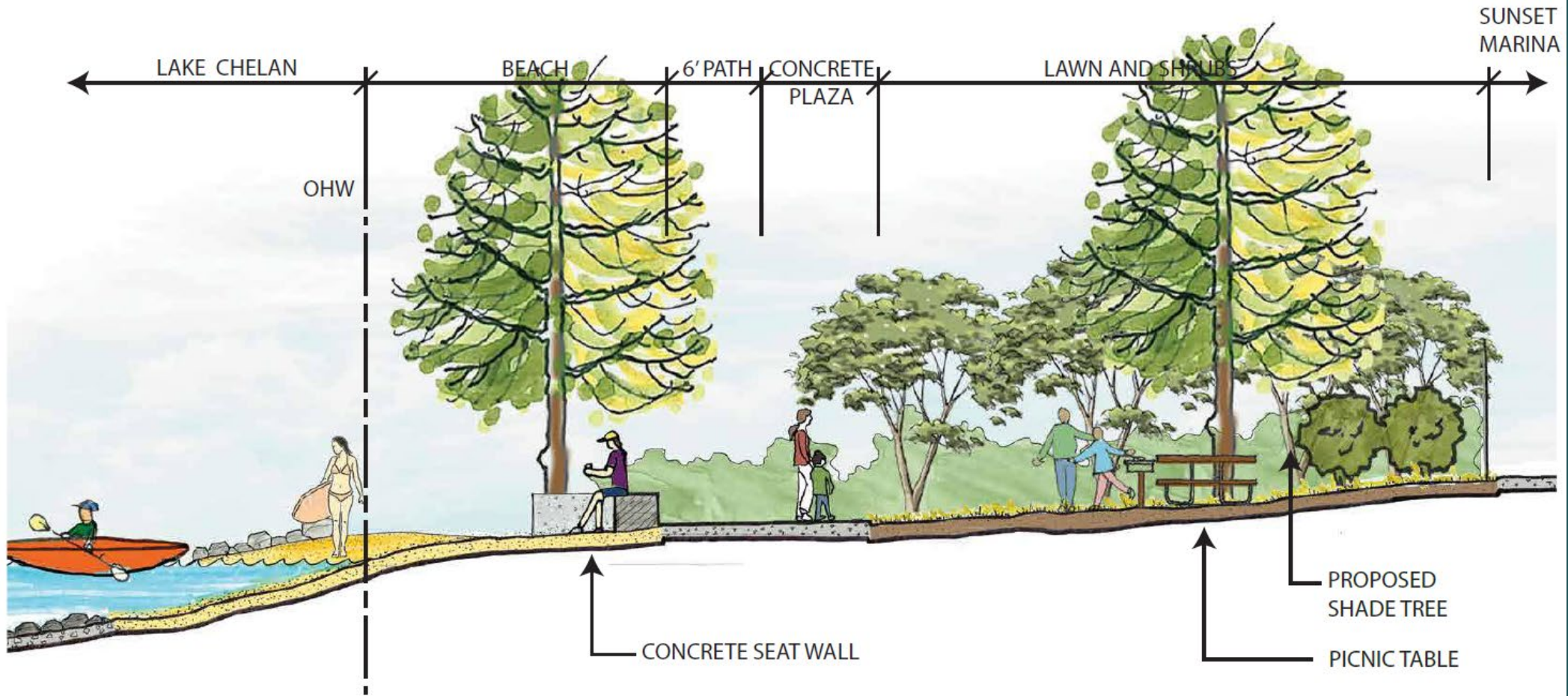
W WOODIN AVE

W MAIN AVE



Conceptual Sketch





Site E: #13 Vacated Street at Sunset Marina & Lady of the Lake

Date: 08/04/2020

Chelan Waterfront Access Plan

CITY OF CHELAN

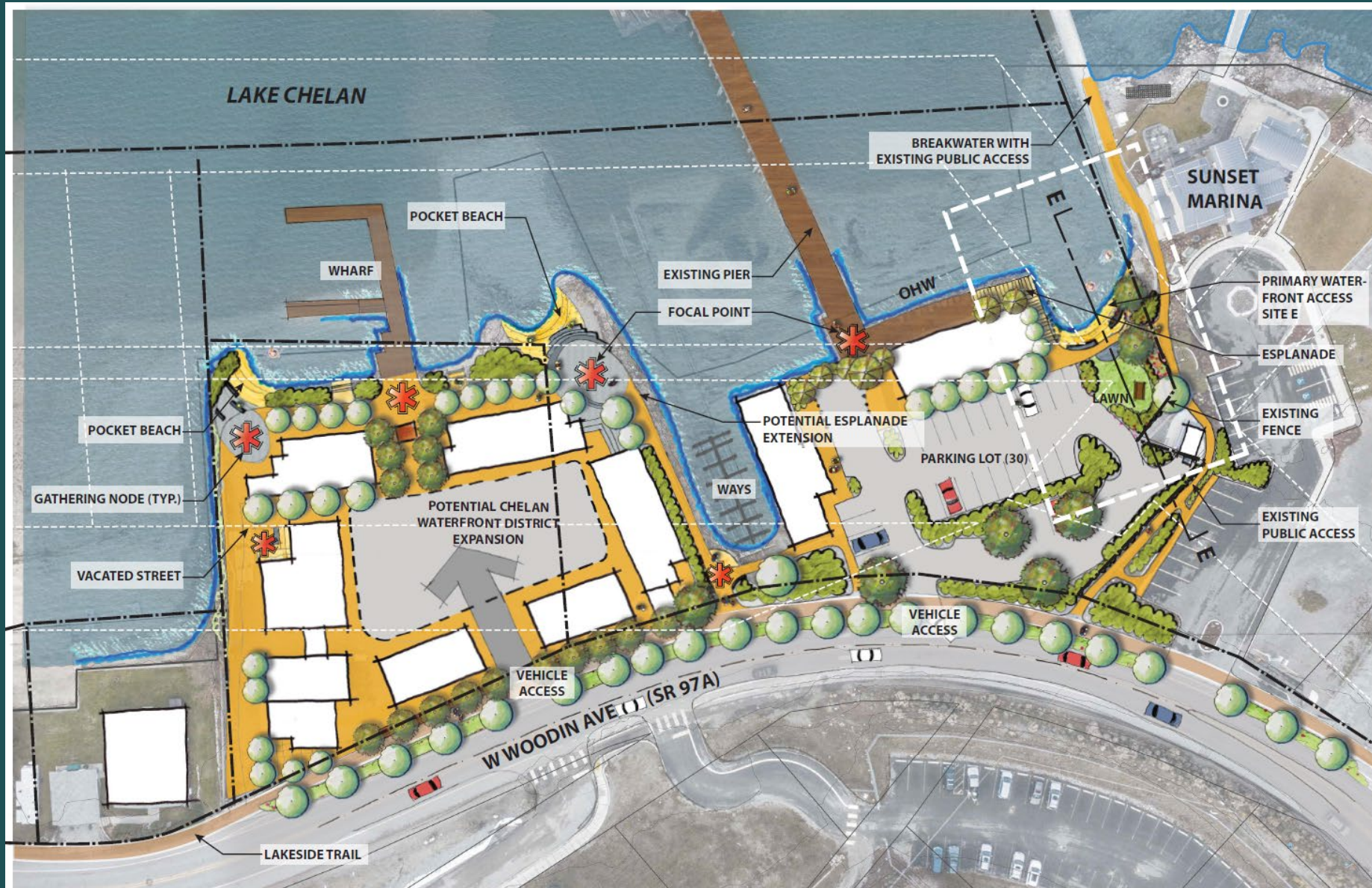


Scale: 1/4" = 1' - 0"



j.a. brennan
ASSOCIATES PLLC





Site E: #13 Vacated Street at Sunset Marina & Lady of the Lake Wharf (Concept Plan)

Chelan Waterfront Access Plan

08/04/2020

CITY OF CHELAN



Scale: 1" = 20'



j.a. brennan
ASSOCIATES, LLC

5/21/2017 10:19 AM

Spader Bay

Synergy

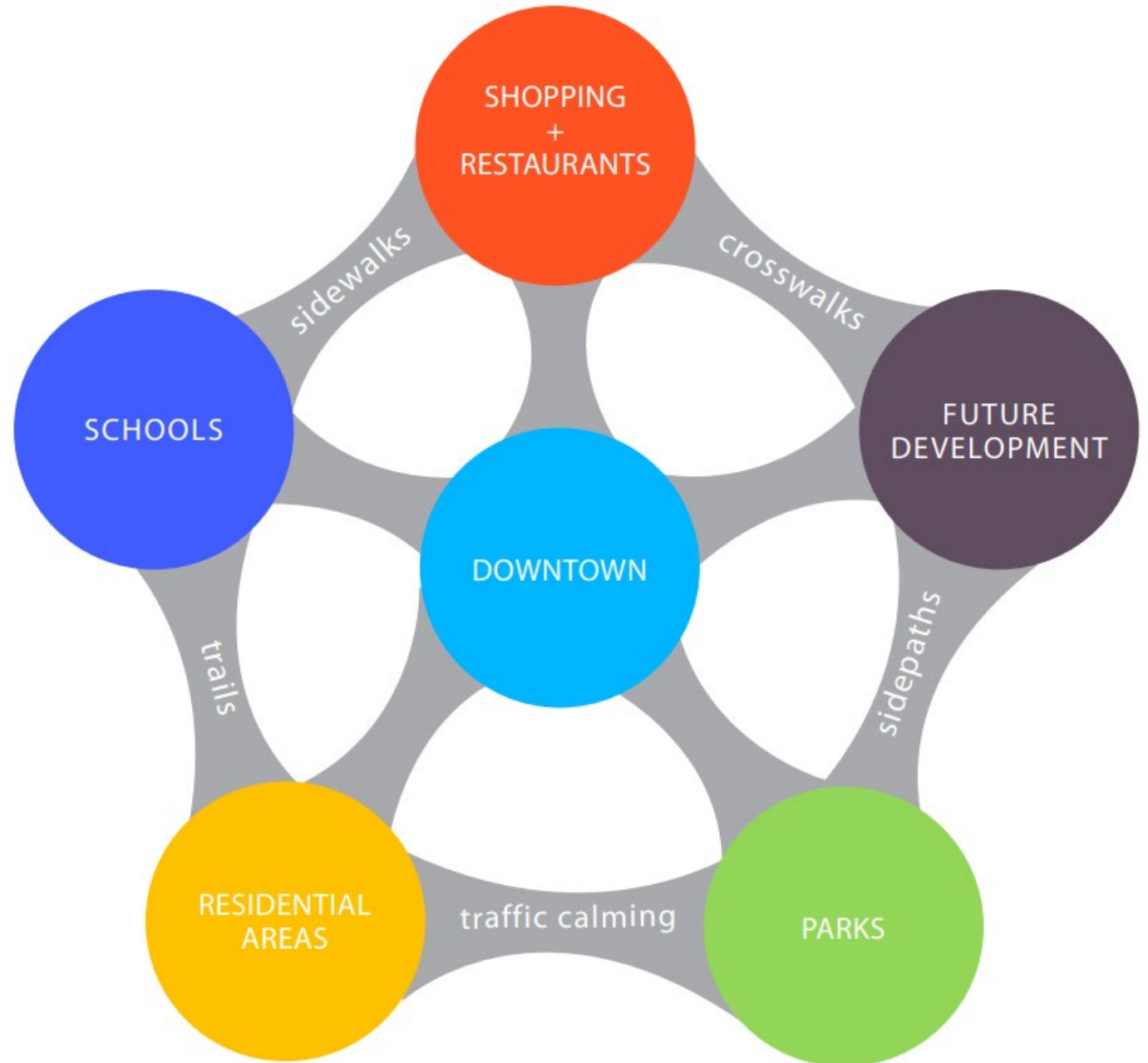
An old saying, "The whole is greater than the sum of its parts", expresses the basic meaning of *synergy*.

Trail Planning



Hub & Spoke Model

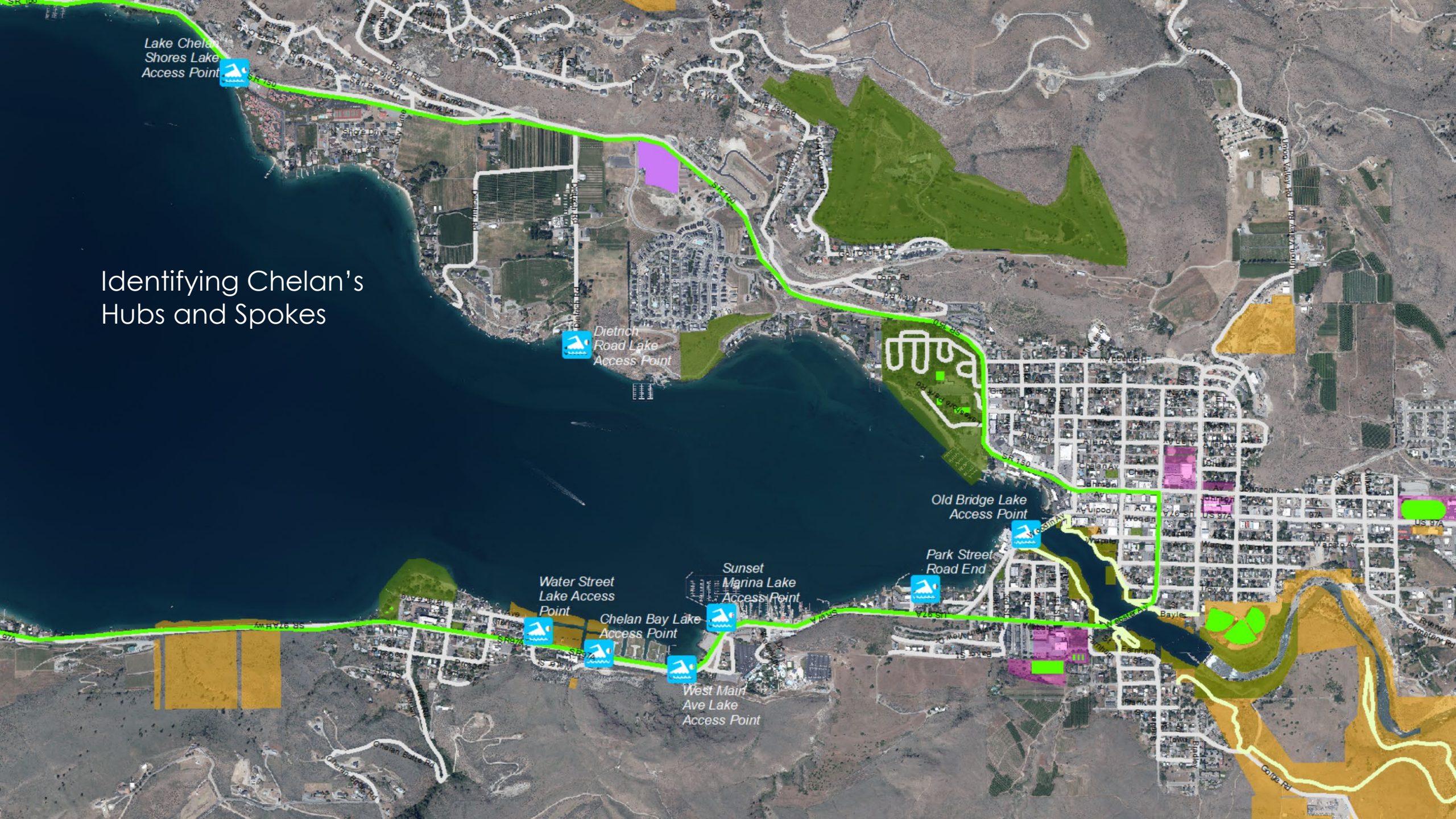
The guiding philosophy in devising the network is the hubs and spokes model. Pedestrian corridors (spokes) should connect to trip attractors (hubs), such as parks, schools, Downtown, shopping centers, and other pedestrian corridors. The network then becomes a practical solution for pedestrian connectivity.





Historic Precedent – Frederick Law Olmstead's Emerald
Necklace Boston & Brookline, MA circa 1837

Identifying Chelan's Hubs and Spokes



References

- ▶ An overview of the considered potential sites from 2019 can be found here: <https://cityofchelan.civicweb.net/document/22472/>
- ▶ A refined list of projects, with preliminary conceptual designs and cost estimates can be found here: <https://cityofchelan.civicweb.net/document/32481/>
- ▶ The Park Street Park update from Nov 8, 2022, can be found here: <https://cityofchelan.civicweb.net/document/44233/>

Council Actions

- ▶ Council approved the Professional Services Agreement with J.A. Brennan for the Chelan Waterfront Access Plan and Spader Bay Property Feasibility Study at the August 27, 2019, Council meeting.
- ▶ J.A. Brennan provided an update on the Chelan Waterfront Access Plan at the October 8, 2019, City Council meeting and participated in the Town Hall Meeting on October 9, 2019, to gather input from the community. An update on those two meetings was provided by Mr. Brennan at the October 22, 2019, Council Meeting.
- ▶ Concept designs were provided to Council on November 26, 2019.
- ▶ Parks Director Horne provided updates to Council on July 28, 2020, August 11, 2020, and again on June 8, 2021.
- ▶ Council received a cost analysis and prioritization list for the road ends on June 22, 2021.
- ▶ On July 27, 2021, and October 12, 2021, Council received an update on the Chelan Waterfront Access Plan.
- ▶ On April 12, 2022, Council approved an agreement with GCH for the design of the Park Street Public Access Point.
- ▶ On November 8, 2022, Council received an update on the Park Street Public Access Point.
- ▶ On December 13, 2022, Council approved the Professional Services Agreement with Grette Associates for permitting services for the Park Street Road End.