



Meeting Summary

Lake Chelan Community Open Space Vision Community Meeting #2

Thursday, January 26, 5:30 to 7:30 PM
City of Chelan Council Chambers
135 E Johnson Ave, Chelan, WA 98816

Participants

Arthur Zul
Barry DePaoli, Lake Chelan School District
Bruce Hurst
Butch Wiese
Clint Campbell
Craig Gildroy, City of Chelan
Curt Soper, Chelan-Douglas Land Trust
Dennis Rahm
Doug England, Chelan County
France Belfast
Garth Donald
Gary Sterner
Gerry Ustanik
Guy Evans, Lake Chelan Trails Alliance
Hanne Beener, Chelan-Douglas Land Trust
Jane Vaccaro
Jason Doten
Jillian Foster, Go Lake Chelan
Jim Fankheuser
Joanie Bankson
John Page Jr
John R. Olson
Julianne Fleischman
Karen Sargeant, City of Chelan
Ken Dull, Roll and Flow Trail Design
Kim Ustarik
Larry Hibbard
Leslie Myers
Linda Fankheuser
Luke Evans

Lynette Grandy
Marilyn Clements
Mickey Fleming, Chelan-Douglas Land Trust
Mike Jackson, City of Chelan
Mike Kaputa, Chelan County Natural Resources
Mike Williams, Department of Natural Resources
Morgan Pieton
Paul Willard, US Forest Service
Peri Gallucci, City of Chelan
Phil Long, LCRF
Ray Heit, Chelan PUD
Rob Campbell, Manson Parks
Robert Fifer
Robin Pittman, Manson Parks
Rod Anderson, Lake Chelan Reclamation District
Ron Fox, Washington Dept Fish & Wildlife
Servando Pobledo, Lookout
Stephen Jiran
Steve Boundingdun
Steve Clark
Steve Kline
Tammy Lee Hauge, Chelan Basin Conservancy
Tim Bankson
Tim Hollingsworth
Zach Johnson, Mirror
Adrienne Truex, All Points GIS
Amy McNamara, The Trust for Public Land
Amy Morris, The Trust for Public Land
Ann Welz, The Trust for Public Land

Meeting Goals

- Review draft vision statement and guiding principles
- Review recent outreach efforts
- Discuss draft goal maps
- Introduce stakeholders to field verification process for trails
- Discuss key obstacles and opportunities increasing recreational access as part of the Open Space Vision

Agenda

1. Welcome and Introductions

The room was full and the meeting was called to order at 5:40. Chelan Mayor Mike Cooney welcomed participants and congratulated the group for staying involved. He mentioned having met with the city manager a year ago to think about how they wanted the community to look for the next generation. Amy Morris from The Trust for Public Land led round robin introductions and asked participants to share their favorite place to spend time outdoors. Favorite places ranged from the Butte to the Lake to attendees' backyards. Participants mentioned enjoying hiking, biking, fishing, paddle boarding, and many other outdoor activities.

2. Overview of Meeting Goals and Open Space Vision Process

Amy reviewed the meeting agenda and goals and provided an overview of the Open Space Vision process. She noted that the ultimate goal of this process is to help the community make the best possible decisions about conservation and recreation priorities. The steps in the Open Space Vision process are:

1. Gather community input (interviews, surveys, speak outs, community meetings)
2. Analyze community input
3. Collect data and translate into GIS models
4. Weight criteria and goals based on technical team and community input
5. Create maps that reflect community priorities
6. Develop an implementation plan
7. Prepare a report that includes maps, community priorities, and action steps

The four goals being mapped based on community input are: **(1) Protect water quality; (2) Promote community health through increasing access to trails, parks, and the lake; (3) Protect wildlife habitat; and (4) Preserve agricultural land.**

Early community input did not adequately represent younger community members or Hispanic community members, so there has been ongoing outreach to these groups. There have been 118 responses to the community survey through outreach to local high schools. Spanish-language materials and survey are being distributed now. Amy briefly reviewed the results from the youth-focused survey. Responses indicate major concern about the lake and about fire. Word cloud of response to question "What do you love most about the Lake Chelan area?" is shown below. Other survey results are included in the attached meeting slides.



3. Review of Vision and Guiding Principles

Amy reviewed the draft vision and mission statements and guiding principles. All were developed based on feedback from the October 2016 community meeting—and additional focused input from Guy Evans and Barry DePaoli. Participants discussed the drafts with a partner and then turned in copies with proposed revisions and suggestions. Overall, participants were generally happy with the vision and mission statements, and there were no consistent revision suggestions, so those will remain the same (as shown below). General comments on the vision, mission, and guiding principles included the need for the effort to reflect the area’s Native American history and the need to prioritize more jobs and business opportunities. Some commenters expressed a desire for more clarity about “local values” and more specificity about “environmental quality,” but others wanted the language to be even more concise.

Vision

To thrive in a valley defined by its spectacular scenery, small-town character, agrarian traditions, and world-class recreation, and to leave a community rich in opportunity for future generations.

Mission

To steward our valley’s open spaces in ways that improve access, protect environmental quality, and enhance the vitality of residents and visitors.

Guiding Principles

There were a number of proposed revisions to the guiding principles—many of which addressed the same general concerns. A revised version of the guiding principles (shown with tracked changes) is included in the attachments for the meeting summary.

4. Overview of Goal Maps

Adrienne Truex from All Points GIS reviewed the draft maps for each of the four Open Space Vision goals: (1) protect water quality; (2) promote community health through increasing access to trails, parks, and the lake; (3) protect wildlife habitat/natural lands; and (4) preserve working lands. She briefly showed the relationship between the criteria and the goals. Adrienne noted that the maps are currently in draft stage (not yet reviewed by technical team) and criteria are equally weighted. The technical team will work on the final weighting for the criteria within each goal. Community meeting participants will help direct the weighting of each goal within a final overall map. See attached meeting slides for more detail. After the meeting, participants had an opportunity to review the maps and note any concerns or any suggestions for additional criteria. Feedback on goal maps included a question about why Manson looked so red on the water quality map and a question about how to address the impacts of runoff on water quality. Participants also identified some missing features on the wildlife goal map.

5. Introduction to Field Verification

Guy Evans from the Lake Chelan Trails Alliance (LCTA) discussed LCTA's interest in the Open Space Vision. LCTA is motivated by the opportunity at hand to address lack of access to the foothills and to the lake. Access was not prioritized by earlier residents and leaders who were just trying to live and build their businesses in a leaner era. The LCTA has come up with a list of a potential "top 20" new trails in the area. Guy invited people to add the list by drawing on the map. LCTA would like to see the Lake Chelan area become well-known for its "5 days, 5 hikes, 5 views"—opportunities for five iconic hikes in five days (Chelan Butte and Little Butte, Bear Mountain, Deer Mountain, 4th of July Mountain). Other trail ideas include a Lake Loop Chelan to Manson and trails that showcase local history (like Guy's grandfather's brick home).

After Guy described LCTA's vision for local trails, Amy discussed the field verification process that will be used to gather data for prioritizing trails. The goals of field verification are to determine which segments are priorities; identify better alternative routes; identify positive and negative hot spots; rate segments; and build excitement about potential new trails. Volunteers are trained to give trails scores based on viability, user experience, community health benefits, and equity of access. The following community members volunteered to help with field verification. Amy and Guy will contact them with more details in March.

Steve Clark
Tim Hollingsworth
Ken Dull
Jason Doten

Bruce Hurst
Garth Donald
Servando Pobledo

Jim Fankheuser
Linda Fankheuser
Leslie and Gary Myers

6. Trail, Water, Park Access Workshops

Attendees were divided into four small groups by counting off by fours. Each group had a copy of the study area map. Facilitators Amy Morris, Amy McNamara, Hanne Beener, and Guy Evans each led a 15 minute discussion of the major opportunities and constraints for increasing access to trails, parks, and the lake. At the end of the discussions, participants used dot stickers to vote for their two opportunities and two constraints that they believe are most critical. The top opportunities identified included extending the Reach One trail, utilizing public rights-of-way for lake access, and acquiring land and trail easements. The top obstacles identified were private property limiting access to the Butte, private

property owners' objections to increased lake access, and need for maintenance for areas with informal public access. The full results of these workshops are shown in Tables 1 and 2 at the end of this summary.

7. Closing

At the end of the meeting, Amy and Mayor Cooney thanked participants for attending and providing input.

Next Steps

- Finish Spanish language and youth outreach
- Work with Technical Team to complete priority modeling and criteria weights
- Field verification (when weather allows)
- Present final goal maps and work on weighting combined map (next community meeting: April or May)

Attachments

- Access workshop full results
- Mission, vision, and revised guiding principles
- Meeting slides

Access Workshop Full Results

Table 1. Opportunities for Access to Lake, Trails, and Parks

Opportunities	Votes	Notes
Reach One (complete loop/extend trail)	10	Need to work with Chelan PUD
Utilize public ROWs to the lake	7	City/county streets that dead-end or touch the lake
Acquire land and trail easements	6	
Butte mountain bike trails and trails to old mining sites	4	Need to protect/formalize access
Pedestrian access to Chelan Falls/Gorge Bridge	4	
Three Fingers public access/park	4	Citizen proposal, issue will go to WA supreme court, how involved with City of Chelan get?
Vineyard and orchard trail	4	Irrigation ROWs could be good trails
Full utilization of Manson Bay Park Waterfront	3	
Lakeshore Loop	3	Starting with Lakeside --> Chelan --> Manson
Revive Manson Scenic Loop	3	Existing and signed, but underused/unknown
Chelan Gorge Trails (old roadways)	2	
Develop local funding source to match state and federal funds	2	
Improve pedestrian and bike safety for Chelan-Manson highway corridor	2	
Lakeside Park on the narrows (northside)	2	
Non-motorized Lake Loop (interpretive)	2	Need place along lake to rest/dock kayak
Old CCC box canyon trail	2	
Stormy Mountain	2	Existing trails, but not maintained
Wayfinding signage	2	
25 mile creek USFS access	1	Open, but not open
Bear Mountain access	1	
Brick House Canyon	1	
Pedestrian-friendly lakeshore walkway	1	
Riverwalk Park swim access points	1	PUD obstacle?
Upper and Lower Joe Circle Loop	1	Existing paved city roads
Utilize Reclamation District ROW	1	Wrap lake to downtown Manson (need to educate board; identify hot spots and mitigation)
25 mile state park	0	Use 300-400 feet of existing state owned waterfront
Area to watch white water rafting	0	
Horse trail near rodeo	0	
Off-leash dog park	0	
20 acre county property (mouth of Poisen Creek)	0	Conservation District working on habitat zone

Table 2. Obstacles for Access to Lake, Trails, and Parks

Obstacles	Votes	Notes
Private property limits access to the Butte	14	Need owners willing to sell or donate access, liability concerns
Private property owners' objections to increased lake access	10	Unknowns and liability
Maintenance for areas with informal public access	6	Existing access is small, limiting for parking and sanitation
Funding	5	
Trailheads and parking for existing lake access	5	Especially Lakeside area, need safety improvements

Jurisdictional coordination (local/state/federal)	3	Need multi-agency group to coordinate
Lake access	2	Need more boat launches, possible issues with county survey in Manson
Orchard overspray	2	
Access to Brickhouse Canyon	1	
Lakeside Loop has very narrow corridor	1	
Permitting	1	
Safety	0	
Topography	0	
Wayfinding signage	0	

Lake Chelan Community Open Space Vision

DRAFT Vision, Mission, and Guiding Principles

Vision

To thrive in a valley defined by its spectacular scenery, small-town character, agrarian traditions, and world-class recreation, and to leave a community rich in opportunity for future generations.

Mission

To steward our valley's open spaces in ways that improve access, protect environmental quality, and enhance the vitality of residents and visitors.

Guiding Principles

1. The lake is the centerpiece of our valley's spectacular natural beauty. We must protect the lake and its water.
2. The Open Space Vision ~~must reflect local values. It~~ should be based primarily on the priorities of local residents, including seasonal residents, but should also incorporate the perspectives of visitors who love the valley.
3. The Open Space Vision should be inclusive, and ~~it~~ should encompass the varied perspectives ~~from of~~ the entire community, ~~including young people and Hispanic residents.~~
4. We value our agricultural heritage and our small town character. We encourage conservation efforts that protect family farms ~~farms and vineyards~~ and preserve our small town culture.
5. We ~~need believe it is important~~ to increase opportunities for public access to the lakeshore and to trails in our foothills, ~~particularly Chelan Butte~~. Increasing opportunities for recreation promotes community health.
6. We strongly respect private property rights, ~~We~~ only support voluntary conservation involving willing landowners. ~~We strongly respect private property rights.~~
7. Protecting our extraordinary scenery and natural environment and expanding our recreational opportunities will increase local quality of life. It will also ~~and~~ help ensure that our economy is vibrant and rich in opportunities for current residents and future generations.

Lake Chelan Community Open Space Vision

January 2017



Conveners

- City of Chelan
- Lake Chelan Trails Alliance
- Chelan-Douglas Land Trust
- The Trust for Public Land



Meeting Goals



- REVIEW open space vision process, youth survey results, draft goal maps, field verification approach
- DISCUSS vision, mission, guiding principles and opportunities and obstacles for increasing access

Agenda



- Welcome and introductions
- Overview of meeting goals and open space vision process
- Review of vision, mission, and guiding principles
- Overview of draft goal maps
- Introduction to field verification
- Trail, water, and park access workshops
- Next steps and closing

Building a Community Open Space Vision

Why Protect Open Space?

Because protected open space can:

- Filter water, clean air, and control flooding
- Protect natural lands and preserve agricultural traditions
- Connect communities and foster stronger community identity
- Support recreation that attracts residents, businesses, and tourists who contribute to the local economy

Community Open Space Vision

Will:

- Combine community input with state-of-the-art mapping and modeling and the best available data
- Provide tools to guide planning
- Identify opportunities to meet multiple goals
- Prioritize areas for voluntary open space protection
- Build on local efforts and previous plans

Will NOT:

- Map land use prohibitions
- Take feedback from only one perspective or user group
- Focus only on wildlife
- Involve condemning or taking land/private property

Open Space Vision Steps

1. Gather community input (interviews, surveys, speak outs, community meetings)
2. Analyze community input
3. Collect data and translate into GIS models
4. Weight criteria and goals based on technical team and community input
5. Create maps that reflect community priorities
6. Develop an implementation plan
7. Prepare a report that includes maps, community priorities, and action steps

Community Open Space Vision Goals

1. Protect water quality
 2. Promote community health through increasing access to trails, parks, and the lake
 3. Protect wildlife habitat
 4. Preserve agricultural land
-
- These goals are based on speak out and survey results
 - Ultimate goal to help community make the best possible decisions about what to **protect** and **connect**

Youth-focused Survey Results

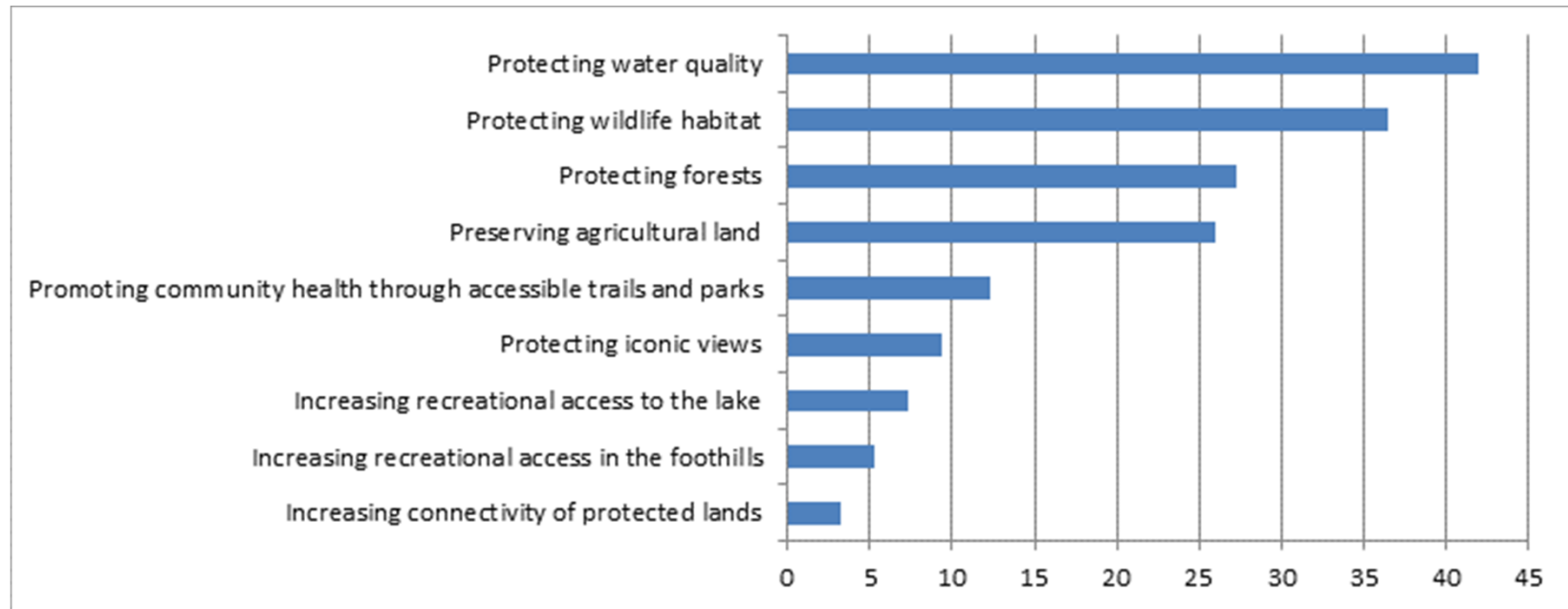
- Reached out to Chelan and Manson schools (will do map activity too)
 - 118 responses (some teachers and staff)
 - 55% white/non-Hispanic
-
- Conducted youth-focused survey because earlier community survey had a lot of participants (527), but 93% from white, non-Hispanic and skewed older
 - Continuing to work on outreach to Spanish speakers



Youth Outreach: Most pressing concerns



Youth Outreach: Priorities for Lake Chelan area



Answered: 94 Skipped: 23

Vision, Mission, Guiding Principles

Draft Vision Statement and Mission

Vision

To thrive in a valley defined by its spectacular scenery, small-town character, agrarian traditions, and world-class recreation and to leave a community rich in opportunity for future generations.

Mission

To steward our valley's open spaces in ways that improve access, protect environmental quality, and enhance the vitality of residents and visitors.

Draft Guiding Principles

1. The lake is the centerpiece of our valley's spectacular natural beauty. We must protect the lake and its water.
2. The Open Space Vision must reflect local values. It should be based primarily on the priorities of local residents, including seasonal residents, but should also incorporate the perspectives of visitors who love the valley.
3. The Open Space Vision should be inclusive. It should encompass perspectives from the entire community, including young people and Hispanic residents.
4. We value our agricultural heritage and our small town character. We encourage conservation efforts that protect family farms and vineyards and preserve our small town culture.
5. We believe it is important to increase opportunities for public access to the lakeshore and to trails in our foothills, particularly Chelan Butte. Increasing opportunities for recreation promotes community health.
6. We only support voluntary conservation involving willing landowners. We strongly respect private property rights.
7. Protecting our extraordinary scenery and natural environment and expanding our recreational opportunities will increase local quality of life and help ensure that our economy is vibrant and rich in opportunities for current residents and future generations.

Reviewing Vision, Mission, Principles

- Spend 5 minutes discussing draft vision, mission, and guiding principles with a partner
- Write in any changes and comments
- Hand in your suggestions

Goal Maps

Example Resource Goal – Protect Water Quality in Rivers and Streams

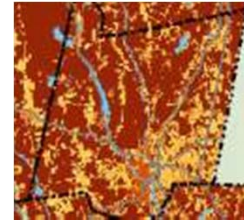
1. Protect natural lands along rivers, streams and drains
2. Protect permeable soils
3. Protect lands in areas where there is low depth to water table
4. Protect Lands in aquifer recharge zones

Existing data used to create a priority scale from 0 – 5, with 5 representing Highest priority.



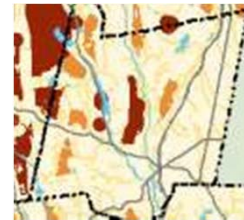
Example Resource Goal – Protect Water Quality in Rivers and Streams

Protect natural lands along rivers, streams and drains



30%

Protect permeable soils



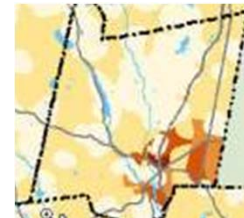
50%

Protect lands in areas where there is low depth to water table



10%

Protect Lands in aquifer recharge Zones



10%

Composite



DRAFT Maps

1. Not all criteria results have been created
2. Looking at criteria for which **land conservation** can provide a positive impact
3. Draft combined results on each map are equally weighted right now
4. Technical team will work on final criteria weighting

Resource Goal – Water Quality

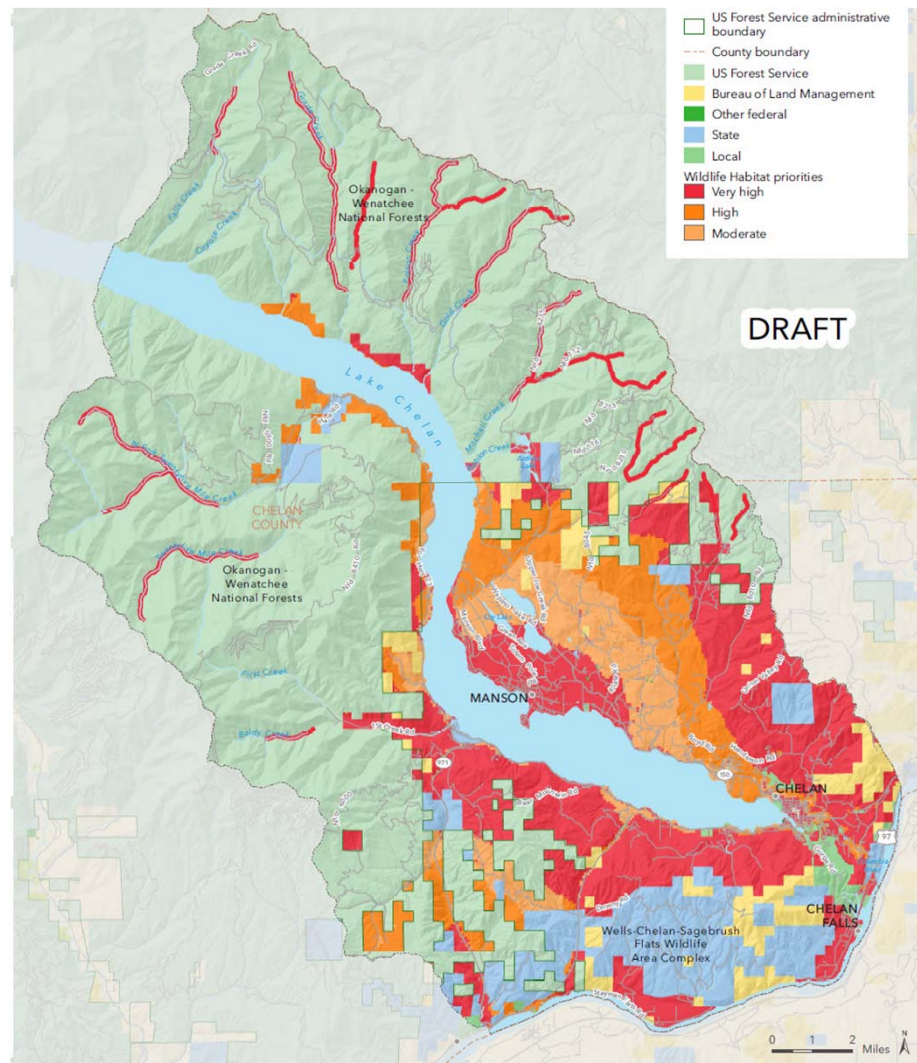
- Criteria from Technical Team, the County, and other local water quality experts
 - Review of the Dept of Ecology data on DDT and PCB impacts in the Lake Chelan watershed
-
1. Criteria 1: Protect riparian areas
 2. Criteria 2: Minimize soil erosion into surface water
 3. Criteria 3: Minimize DDT Transport into surface water and through soil into groundwater
 4. Criteria 4: Identify locations for constructed wetlands



Resource Goal – Wildlife Habitat

- Criteria from community meeting and Technical Team
 - Working to obtain WA DFW Priority Habitat and Species data and Natural Heritage Program data on rare and native plant locations
 - Technical Team helping with best ways to represent diverse habitat areas, may involve data creation
-
1. Criteria 1: Protect highly diverse forests
 2. Criteria 2: Protect bald eagle, osprey and owls nest buffers
 3. Criteria 3: Protect native plants and animals
 4. Criteria 4: Protect ungulate habitat
 5. Criteria 5: Protect native trout

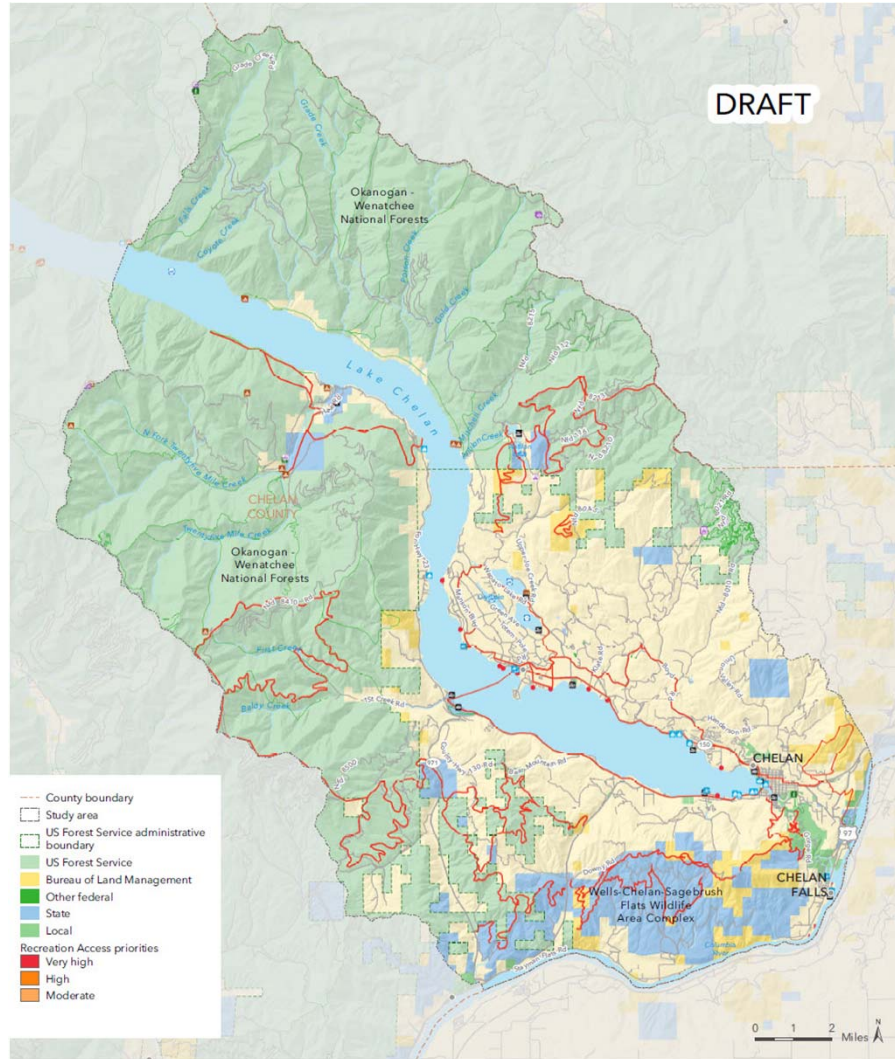
Wildlife Habitat



Resource Goal – Recreation Access

- Working with Lake Chelan Trail Alliance to identify potential trail connection areas
 - Digitized lakeshore rights of way and are developing methodology for public access points
 - Assembling comprehensive conserved lands dataset to identify gaps
-
1. Criteria 1: Increase access to the lake
 2. Criteria 2: Create trail connections
 3. Criteria 3: Identify gaps in existing parks and open space

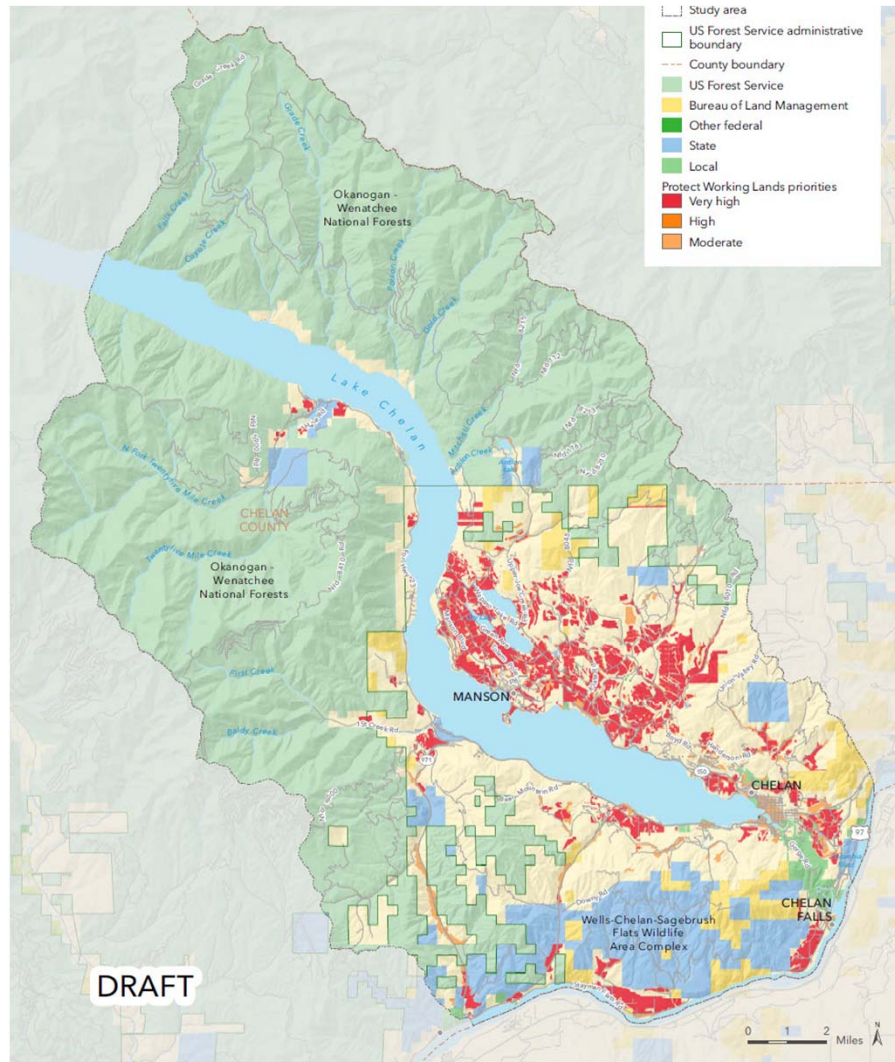
Recreational Access



Resource Goal – Protect Working Lands

- Collected data relevant to potential and existing agricultural activity
 - Working to develop a historical agriculture layer to help guide the modeling process
1. Criteria 1: Protect working lands with water rights
 2. Criteria 2: Protect high quality agricultural soils with low slope
 3. Criteria 3: Protect working agricultural lands
 4. Criteria 4: Protect views of agricultural landscapes

Working Lands



Today's Mapping Input

- At the end of the meeting, please review maps and note concerns or suggestions

Thank you to Technical Team participants!

1. Phil Long – Lake Chelan Recreation Forum
2. Gary Sterner
3. Paul Willard - USFS
4. Coron Polley – City of Chelan
5. Ken Dull – Roll and Flow Trail Design
6. Tim Hollingsworth – Pinnacle Surveying
7. Richard Finger – Washington Department of Fish and Wildlife
8. Ron Fox – Washington Department of Fish and Wildlife
9. Von Pope – Chelan PUD
10. Karen Sargeant – City of Chelan
11. Dave Volson – Washington Department of Fish and Wildlife
12. Graham Simon – Washington Department of Fish and Wildlife
13. Paul Heffernan – Chelan County DNR

Stretch Break!



Trails and Field Verification

Lake Chelan Area Trails



Field Verification Goals

- Determine which segments are priorities
- Identify better alternative routes (if possible)
- Identify positive and negative “hot spots”
- Rate segments
- Build excitement about potential new trails

Hot Spots: Railroad Crossings, Driveway Cuts, Wetlands



Hot Spots: Railroad Corridors and Utility Rights-of-Way



Field Verification

- **Viability Score:** Existing path? Any major impediments?
- **User Experience Score:** Pleasant/iconic views? Noise? Anything notable about sound and feel?
- **Community Health Score:** Near existing public amenities such as schools and hospitals? Shade for people to rest?
- **Equity Score:** Who lives nearby (children, seniors, low income residents)? Would topography be accessible to a wide range of users? Access for community members without a car?

Trail, Water, Park Access Workshops

Opportunities and Obstacles for Access

- Are there specific trail opportunities that should be explored? (Please draw on maps.)
 - What opportunities are there for increasing use of existing parks and community recreation spaces? (For example, ideas for rec center and amphitheater for Don Morse.)
 - What would help increase access to the lake?
 - What are the major obstacles to increasing access?
- Use two dot stickers to vote for top two opportunities and two to vote for top two obstacles

Next Steps



- Finish Spanish language and youth outreach
 - Work with Technical Team to complete priority modeling and criteria weights
 - Field verification (when weather allows)
 - Present final goal maps and work on weighting combined map (next community meeting: April)
-
- Volunteer to field verify trail/s
 - Review maps after the meeting and note any concerns or suggestions

Thank you!



Amy Wilson Morris
Conservation Vision Program Manager
The Trust for Public Land
Amy.Morris@tpl.org

Mitchel Hannon
GIS Project Manager
The Trust for Public Land
Mitchel.Hannon@tpl.org

